

BlinkBerry
User Guide
for version 1.0.0
January 13, 2005



Table of Contents

	<u>Page</u>
1. Introduction	2
2. Blinking LED to Indicate Signal Strength	6
3. Blink Times	6
4. Blink Colors	7
5. External LED Display	7
6. No Service Options	7
7. Support	7

Introduction

The BlinkBerry is a MIDP Java application for BlackBerry devices with firmware 3.8 and greater and a polychromatic LED. BlinkBerry blinks the external LED in different colors according to the signal strength returned from the phone. There are 6 possible signal strengths from 0 to 5. A signal strength of zero indicates no service.

The default configuration of BlinkBerry has the signal strength colors arranged according to the following

Signal Strength	COLOR
0	RED - No Service
1	CYAN
2	MAGENTA
3	BLUE
4	WHITE
5	GREEN -Full Service

The colors are customizable to include any combination of the following colors:

- BLUE
- CYAN
- GREEN
- MAGENTA
- RED
- WHITE
- YELLOW

You can also set the blink duration and the blink period. These preferences are saved in the phone's memory.

There is a user configuration menu where many of the parameters can be customized for a look that is unique.

Your preferences are saved on the device so that the next time you start the application it will remember your preferences.

Installation

First, you need to make sure the built in led signal indicator is turned off so that there is not a conflict between the 2 programs. Select

Tools (wrenches)

Settings (looks like an oven timer)

Screen/Keyboard

Scroll down to the **LED Coverage Indicator** and set that to off.

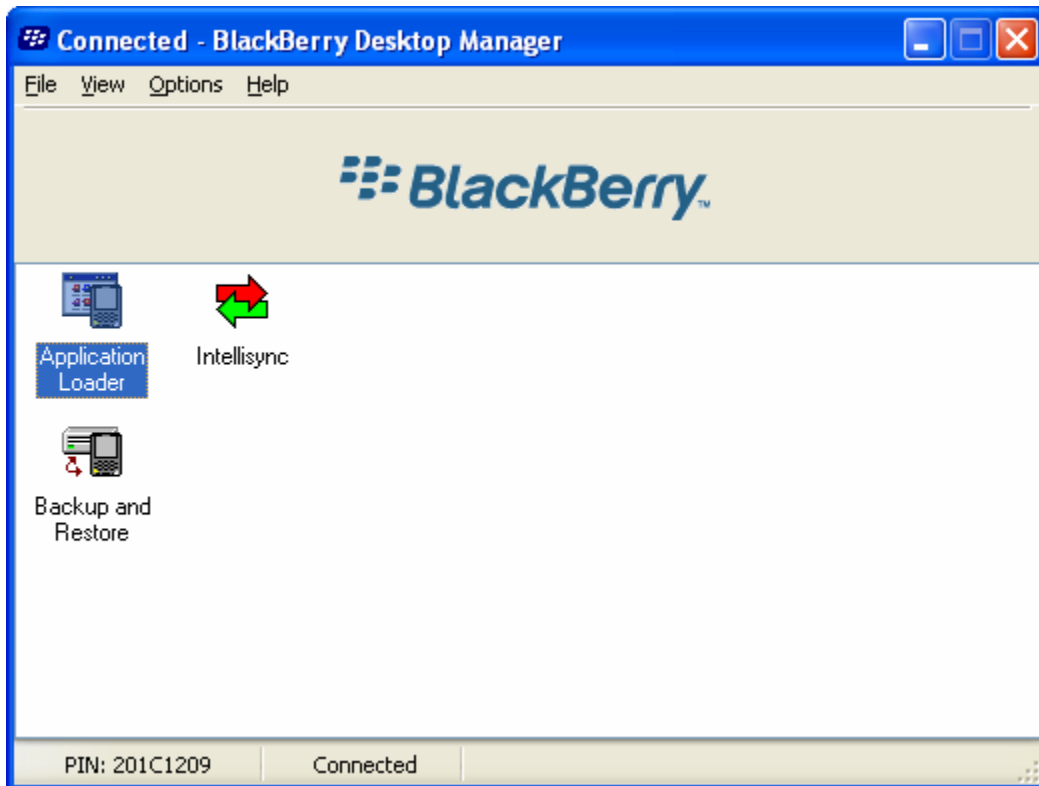
Press the button below the wheel 3 times to get back to the main screen.

Connect your BlackBerry to your computer.

Now on your computer select

Start → **Programs** → **BlackBerry** → **Desktop Manager**

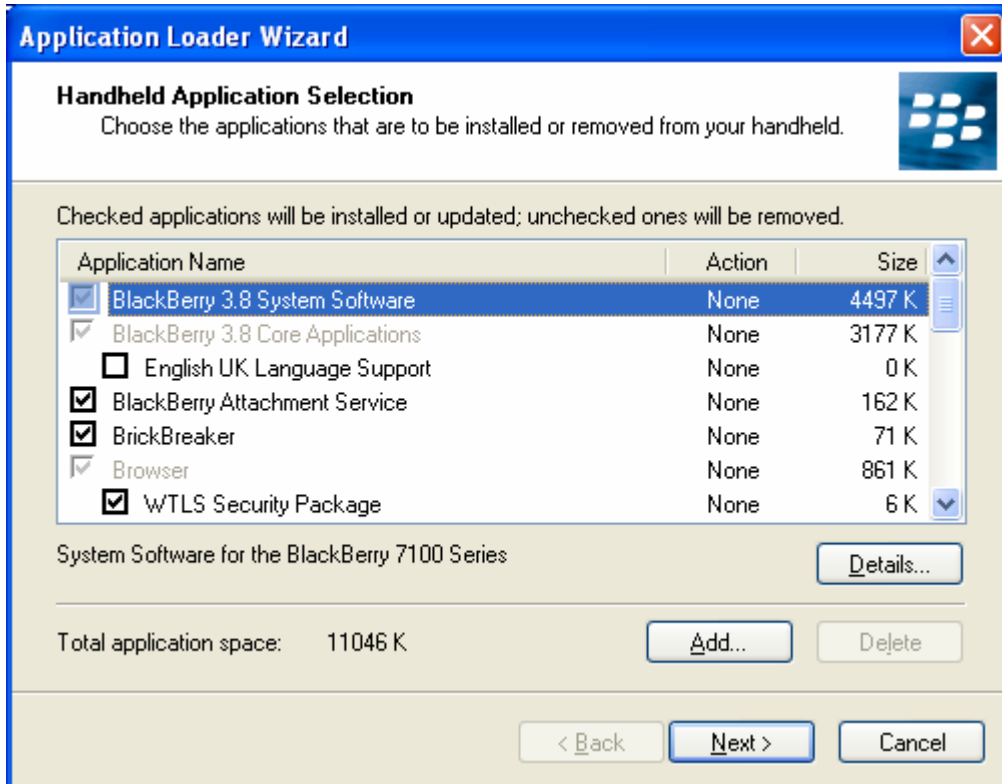
You should see



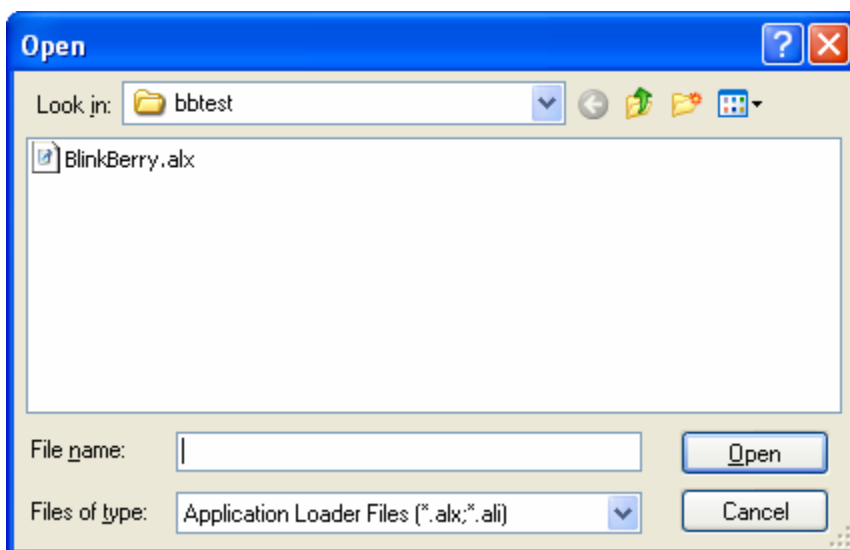
Double click the **Application Loader** icon.

Click **Next**

The following window should appear

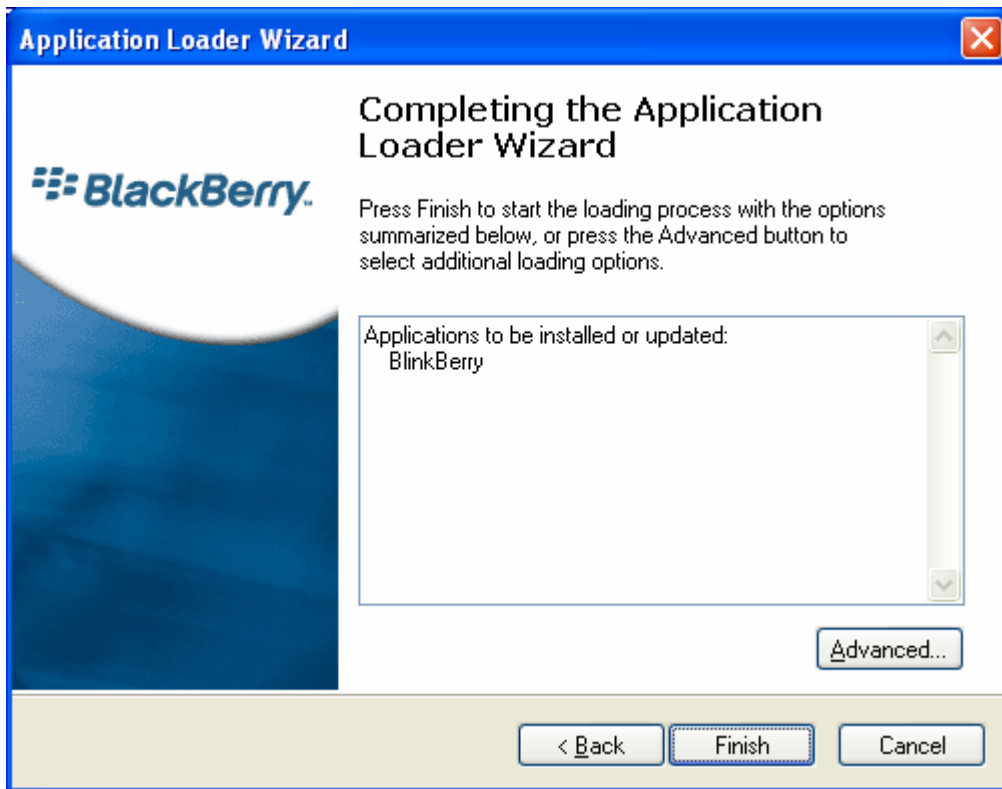


Click the **Add** button. Browse to the location of the ALX and COD files what were unzipped from BlackBerry.zip.



Select the BlinkBerry.alx file and click open.

Click **Next**



Click **Finish**

When it has completed, click close.

Wait for your blackberry to return to the main screen before disconnecting it from your computer or exiting the application loader. If either is done prematurely, the phone will get stuck trying to get the devices time set by the application loader. If this situation should arise, remove the battery momentarily to get it out of this mode.

Blinking LED to Indicate Signal Strength

The blinking led can be completely customized to give your phone a unique character. This is comprised of 2 settings

- Blink Times
- Blink Colors

Note: The program itself consumes a minimal amount of power; however the LED's can drain the standard battery in a few hours. If you find that the battery life is undesirably decreased by using the BlinkBerry, then try increasing the time between blinks, or decreasing the time the blink lasts.

Blink Times

The blink times are configured by setting two parameters:

- Flash Period
- Flash Duration

These times are entered in milliseconds.

1 second = 1000 milliseconds

The Flash Period is the number of milliseconds between the start of the LED on cycle. For example, if you want the program to check the signal strength every 3 seconds then set the Flash Period to 3000.

The flash duration is the number of milliseconds that the LED stays on after the signal strength is determined.

Once you have entered your desired values, press the save option (bottom right) to immediately apply your changes.

Timing issue: You may notice that when you use a Flash Duration under 300 ms it becomes irregular. This is due to Motorola's strategy for conserving battery power. When the flip is closed and the charger is not connected, the phone reduces it reduces the priority of the running applications. If you connect the phone to the charger or open the flip you will notice that the flash timings greatly improve.

Examples:

Check signal strength every 15 seconds and turn the LED on for 1 second

Flash Period	15000
Flash Duration	1000

Check signal strength every 5 seconds and turn the LED on for 1/10th a second

Flash Period	5000
Flash Duration	100

Check signal strength every 9 seconds and turn the LED on for 1/3rd a second

Flash Period	9000
Flash Duration	333

Blink Colors

The Blink Colors determine the color the LED turns in the flash cycle for signal strengths ranging from 0 to 5. A signal level of 0 represents no service; signal strength of 5 indicates full signal. The signal strength of 5 is not achieved regularly, so if you want full signal to be represented by a particular color, you may want to set 4 and 5 to the same color.

From the main menu select **Set Colors**. A list of the signal strengths and the color for that signal strength will be displayed. Select the signal strength you want to change and you will then be presented with a list of colors. The available choices are

- Blue
- Cyan
- Green
- Magenta
- Red
- White
- Yellow

When you make a selection of the color, your preference is saved and applied immediately.

No Service Options

The No Service Steady option when enabled will turn the led on while you are out of your coverage area. The LED color is determined by the signal level 0 setting.

Flashlight

The Flashlight option turns the external LED on at the maximum brightness. It will stay on even if the application is suspended and the device is put back in it's holster.

Fade

The fade setting is a preference for the LED transition. A setting of 25 is a crisp transition from on to off when flashing. A setting of 100 will cause the LED to slowly fade as the led is turned off.

Suspend

Once you have set up your preferences, select this option to suspend the application and use your blackberry as normal.

Support

Codecannon@hotmail.com